

Recommended:

Of the total recommended wall, base, drawer and pantry shelf/drawer frontage, the following should be located within 72" of the centerline of the main cleanup/prep sink:

- a. at least 400" for a small kitchen;
- b. at least 480" for a medium kitchen;
- c. at least 560" for a large kitchen.

Code Requirement:

State or local codes may apply.

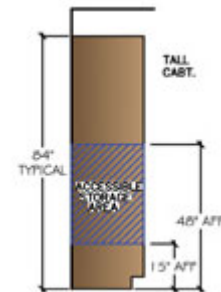
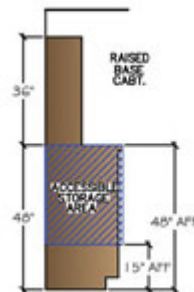
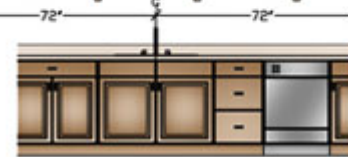
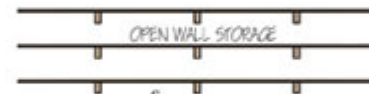
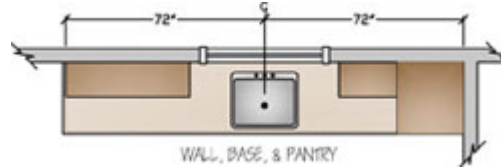
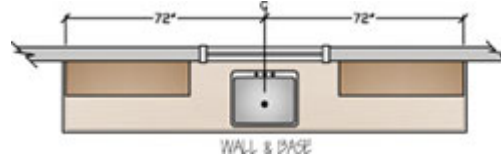
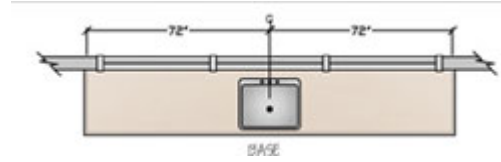
Access Standard

Recommended:

Plan storage of frequently used items 15" to 48" above the floor.

Code Reference:

- See Access Guideline 27 for reach specifications.



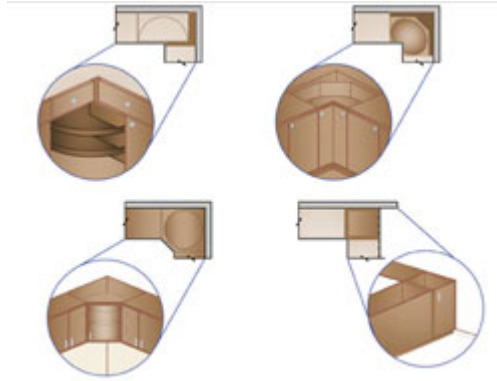
Recommended:

At least one corner cabinet should include a functional storage device

This guideline does not apply if there are no corner cabinets.

Code Requirement:

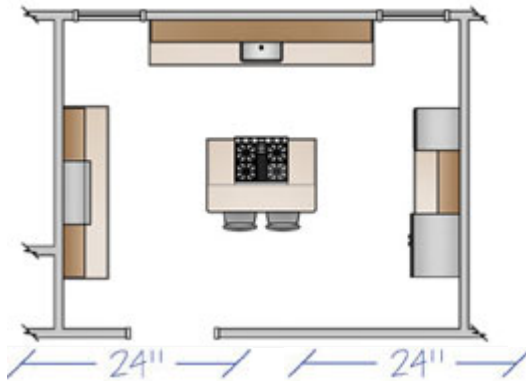
State or local codes may apply.



Access Standard

Recommended:

Kitchen guideline recommendation meets Access Standard.



Recommended:

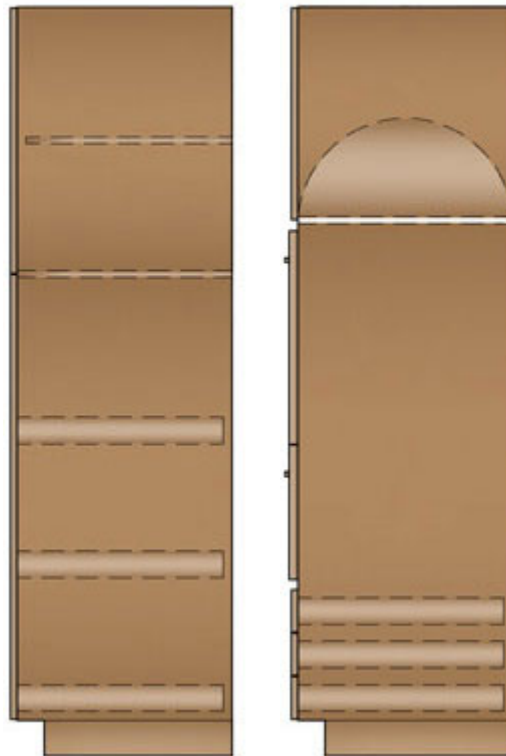
The total shelf/drawer frontage* is:

- a. 1400" for a small kitchen (less than 150 square feet);
- b. 1700" for a medium kitchen (151 to 350 square feet); and
- c. 2000" for a large kitchen (greater than 350 square feet).

The recommended distribution for the shelf/drawer frontage in inches is:

	Small	Medium	Large
Wall	300"	360"	360"
Base	520"	615"	660"
Drawer	360"	400"	525"
Pantry	180"	230"	310"
Misc.	40"	95"	145"

The totals for wall, base, drawer and pantry shelf/ drawer frontage can be adjusted upward or downward as long as the recommended total stays the same.



2 shelves 24" x 2' = 96" pantry storage
+3 drawers 24" x 2' = 144" drawer storage

Tray dividers 30" x 2' = 60" pantry storage
+3 drawers 30" x 2' = 180" drawer storage

Do not apply more than the recommended amount of storage in the miscellaneous category to meet the total frontage recommendation.

Storage areas that are more than 84" above the floor must be counted in the miscellaneous category.

**Shelf and drawer frontage is determined by multiplying the cabinet size by the number and depth of the shelves or drawers in the cabinet, using the following formula:*

Cabinet width in inches x number of shelf/drawers x cabinet depth in feet (or fraction thereof) = Shelf/Drawer Frontage

Storage/organizing items can enhance the functional capacity of wall, base, drawer and pantry storage and should be selected to meet user needs.

Code Requirement:
State or local codes may apply.

Access Standard

Recommended:
Plan storage of frequently used items 15" to 48" above the floor.

Code Reference:

- **Where a forward or side reach is unobstructed, the high reach should be 48" maximum and the low reach should be 15" minimum above the floor. (ANSI A117.1 308.2.1 and 308.3.1)**
- **Where a 20" – 25" deep counter obstructs a forward or side reach, the high reach should be 44" maximum. (ANSI A117.1 308.2.2)**

Total: 144" drawer storage and 96" pantry storage

Total: 180" drawer storage and 60" pantry storage



1 drawer 24" x 2' = 48" drawer storage
+1 shelf 24" x 1' = 24" base storage
+1 shelf (bottom) 24" x 2' = 48" base storage
Total: 48" drawer storage and 72" base storage



1 drawer 24" x 2' = 48" drawer storage
+2 roll-outs 24" x 2' = 96" drawer storage
Total: 144" drawer storage



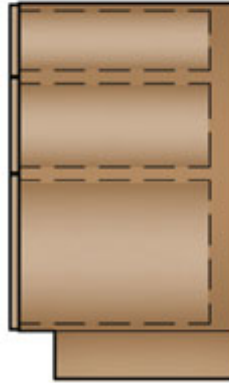
1 drawer 18" x 1 3/4' = 31 1/2" drawer storage
+1 shelf 18" x 1' = 18" base storage
+1 shelf (bottom) 18" x 1 3/4' = 31 1/2" base storage
Total: 31 1/2" drawer storage and 49 1/2" base storage



1 drawer 18" x 1 3/4' = 31 1/2" drawer storage
+2 roll outs 18" x 1 3/4' = 63" drawer storage
Total: 94 1/2" drawer storage

← 18" →

← 12" →



3 drawers $18 \times 1 \frac{1}{2} = 81$ " drawer storage
Total: 81" drawer storage



3 shelves $24 \times 1 = 72$ " wall storage
Total: 72" wall storage

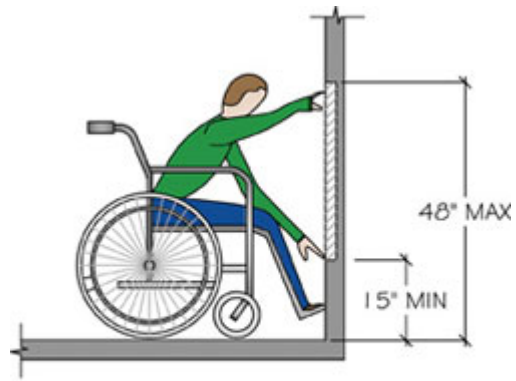
15" 12"



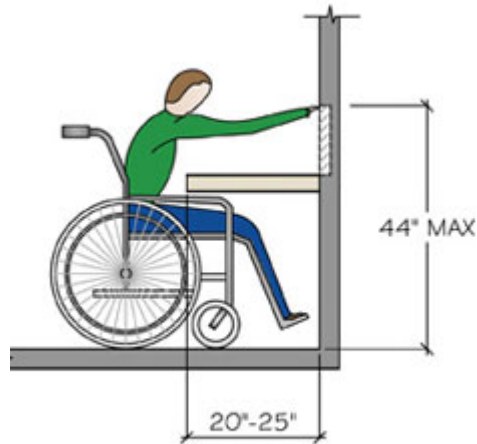
3 shelves $24" \times 1 \frac{1}{4}' = 90"$ wall storage
Total: 90" wall storage



6 shelves $24" \times 1' = 144"$ pantry storage
Total: 144" wall storage



UNOBSTRUCTED FORWARD REACH



OBSTRUCTED HIGH FORWARD REACH

An organized kitchen is a thing of beauty. Let us help you find a place for everything with these smart storage options.



[ADD TO WISHLIST](#)
[ENLARGE IMAGE](#)

**36" BASE
 SUPERCABINET
 (BSC36PRP)**

Configured to provide the most versatility for the widest variety of users, it's an ideal cabinet for organizing and a must-have



[ADD TO WISHLIST](#)
[ENLARGE IMAGE](#)

**36" SINK BASE
 SUPERCABINET
 (SB36STS)**

A more organized way to store everyday cleaning and household supplies under the sink.



[ADD TO WISHLIST](#)
[ENLARGE IMAGE](#)

**30" ROLL-OUT BASES
 WITH LID ORGANIZER
 (B30RT-2LO)**

Two shelves keep pots, pans and plastic containers of various sizes organized, while a special removeable insert keeps like handy.



[ADD TO WISHLIST](#)
[ENLARGE IMAGE](#)

**24" BASE POTS AND
 PANS PULLOUT
 (BPPP24)**

Its two shelves slide out independently of each other, which makes it easier to reach all pots, pans, lids and bakeware stored inside. Wire

in any kitchen.



[ADD TO WISHLIST](#)
[ENLARGE IMAGE](#)



[ADD TO WISHLIST](#)
[ENLARGE IMAGE](#)



[ADD TO WISHLIST](#)
[ENLARGE IMAGE](#)

racks hold everything in its place.



[ADD TO WISHLIST](#)
[ENLARGE IMAGE](#)

30" BASE SUPERCABINET PULLOUT PULLOUT (BSC30RP)

Wire pullout is available on either left or right side, based on your individual needs. This compact version of the SuperCabinet is great for laundry, utility or any room of the home.



[ADD TO WISHLIST](#)
[ENLARGE IMAGE](#)

30" BASE SUPERCABINET PULLOUT ROLLOUT (BSC30PR)

A compact version of the SuperCabinet that provides versatile storage for smaller spaces. Select the wire pullout for either the left or right side



[ADD TO WISHLIST](#)
[ENLARGE IMAGE](#)

LINEN RANGE BASE (LRB)

Whether used as a cooktop cabinet or linen drawer, its two bottom full extension drawers are deep enough for the largest items. Available in 30" and 36" widths.



[ADD TO WISHLIST](#)
[ENLARGE IMAGE](#)

PANTRY ROLL OUT KIT (UPK)

Convert a standard utility cabinet into a pantry with a roll tray kit. Available in 15", 18", 24", 30" and 36" widths.



[ADD TO WISHLIST](#)
[ENLARGE IMAGE](#)

BASE ROTO EASY REACH (BRER)

Two rotating shelves make access easy. Available in 36" width.



[ADD TO WISHLIST](#)
[ENLARGE IMAGE](#)

BASE PANTRY PULLOUT (BPP)

Fill every nook and cranny with functionality. This 9" base cabinet fully extends with adjustable shelves, chrome rail sides and full extension guides.



[ADD TO WISHLIST](#)
[ENLARGE IMAGE](#)

TIP OUT TRAY (STOT)

Hide dish cleaning supplies right where you need them. For 30" or 36" sink base cabinets.



[ADD TO WISHLIST](#)
[ENLARGE IMAGE](#)

BASE WASTEBASKET CABINET (BWB)

Designed for 18 & 21inch base cabinets. Features two 35-quart wastebaskets.



[ADD TO WISHLIST](#)
[ENLARGE IMAGE](#)

APPLIANCE CENTER (AC/ACS)

Gain precious counter space and reduce clutter while keeping your appliances close at hand. Straight and diagonal options available.

SPICE RACK (SRD)

Now all your spices can be lined up ready for action. Mounts to door frame in 30" wall cabinet.

DRAWER SPICE RACK (SR)

Accessory rack keeps spices organized and at your fingertips. Available in 12", 15", 18", 21" and 24" widths.

36" PANTRY (PANTRY)

Store more with swing out racks, adjustable shelves and built-in roll tray in upper portion.



[ADD TO WISHLIST](#)
[ENLARGE IMAGE](#)

CUTLERY TRAY (CT)

A kitchen must-have, this quintessential drawer organizer is included in all drawer base cabinets 15" or wider.



[ADD TO WISHLIST](#)
[ENLARGE IMAGE](#)

BREAD LID KIT (BLK)

Help keep freshness in with this clear acrylic bread lid. Available in 15", 18", 21" and 24" widths.



[ADD TO WISHLIST](#)
[ENLARGE IMAGE](#)

CUTLERY KIT (CBK)

Keep your valuable knives safe and ready for use. Includes a handy built-in cutting board. Can be used in 18" or 36" cabinet drawers.



[ADD TO WISHLIST](#)
[ENLARGE IMAGE](#)

DIAGONAL CORNER ROTO WALL (DCR)

Give better organization a spin. Includes two white rotating shelves with 30lb. weight capacity. 30" high.



[ADD TO WISHLIST](#)
[ENLARGE IMAGE](#)

SQUARE CORNER EASY REACH BASE (SCER)

A piano hinge door opens to easy access to contents inside. Cabinet is also available with two rotating shelves.



[ADD TO WISHLIST](#)
[ENLARGE IMAGE](#)

9" BASE CABINET WITH TRAY DIVIDER (B09)

A built-in tray divider keeps baking sheets organized and easy to access.



[ADD TO WISHLIST](#)
[ENLARGE IMAGE](#)

DOUBLE ROLL TRAYS (BRT-2/BRT)

Great for heavy or bulky items that you want out of the way, except for when you want them. Available as double or single bottom roll trays.



[ADD TO WISHLIST](#)
[ENLARGE IMAGE](#)

BASE PENINSULA CABINET (PB)

Reach contents from either side of the room. Ideal for open floor plans. Available in base and wall sizes.



[ADD TO WISHLIST](#)
[ENLARGE IMAGE](#)

PEGGED DISH ORGANIZER (PDO)

Removable pegboard insert with 8 posts (additional pegs available in sets of 4). Fits 36-inch drawers.



[ADD TO WISHLIST](#)
[ENLARGE IMAGE](#)

BASE WITH ROLL-OUT TRAY DIVIDER

Sturdy wood roll-out tray with removable dividers separates and protects non-stick pans and ceramic surfaces from damage.



[ADD TO WISHLIST](#)
[ENLARGE IMAGE](#)

3" BASE FILLER PULLOUT

Waste not, get more. This brilliant vertical storage solution makes the most of every inch.



[ADD TO WISHLIST](#)
[ENLARGE IMAGE](#)

VANITY CHROME ROLLOUT RACK

Throw those cheap plastic baskets in the recycling bin. Your search for a smarter use of tighter, deeper spaces is over.



[ADD TO WISHLIST](#)
[ENLARGE IMAGE](#)

LINEN CLOSET SUPERCABINET WITH REMOVEABLE HAMPER

Laundry stays out of sight thanks to a removeable glide-out chrome wire basket with canvas liner. Chrome door racks keep small items close at hand.



[ADD TO WISHLIST](#)
[ENLARGE IMAGE](#)

WALL MESSAGE CENTER

Reclaim the kitchen counter with this hidden gem that provides a safe home for all of life's essentials. Includes magnetic whiteboard, key hooks, pencil holder, and fixed Plexiglas fronted shelves.



[ADD TO WISHLIST](#)
[ENLARGE IMAGE](#)

VANITY PULLOUT

Wood pull-out unit with adjustable shelves keep items organized and in reach



[ADD TO WISHLIST](#)
[ENLARGE IMAGE](#)

VANITY SINK BASE SUPERCABINET

Door racks and a wooden shelf help keep things organized and tidy.

•

|